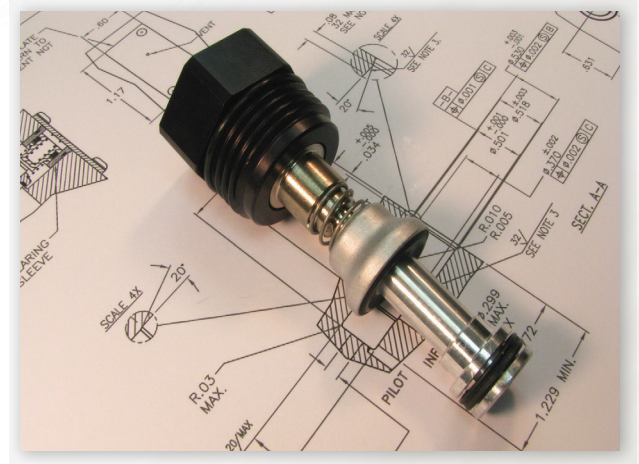
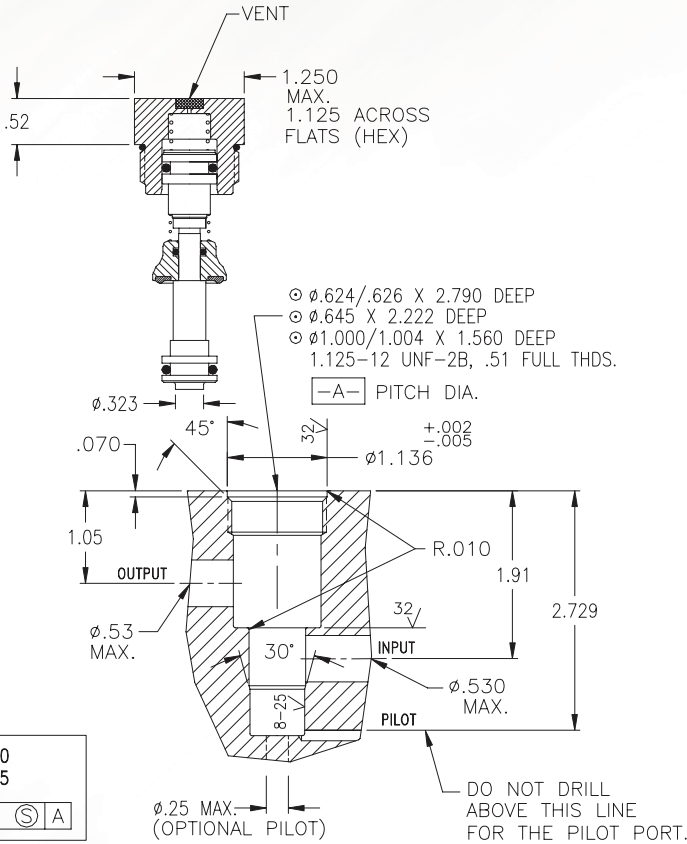


Pneumatic Cartridge Valve for a Manifold, Cv=4



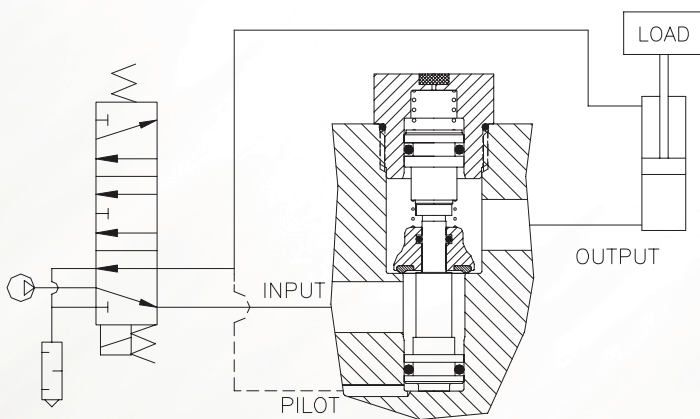
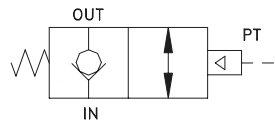
- High Flow
- High & Low Temp
- .000113 cc/min Leak Rate
- Insert From One Side
- Easy Repair

Basic Operation:

Lock your pneumatic device in position when a pressure drop or total loss of pressure occurs.

Operating Data:

Max. Pressure:	150 psi
Min. Pilot Pressure:	40 psi
	25 psi (see table)
Leak Rate:	.000113 cc/min
Temp. Range:	-20 to 150 F (Nitrile)
	30 to 350 F (FKM)
	-40 to 150 F (EPDM)
Cycle Rate:	1 cyc./sec. max.
Max. Flow Capacity (Cv):	4.0
Cracking Pressure:	1-3 psi
Service:	Properly filtered dry air or lubricated air.



Description	Standard	Low Temp*	High Temp
Cartridge, End Cap & Spring	BC5MNAS	BC5MNAST40	BC5MNASV
Cartridge & Spring	BC5MN	BC5MNT40	BC5MNV

*No petroleum based lubricants. Comes lubricated with a silicone based lubricant. Add (-K18) to the model number for a lower pilot pressure (Ex: BC5MNAS-K18).