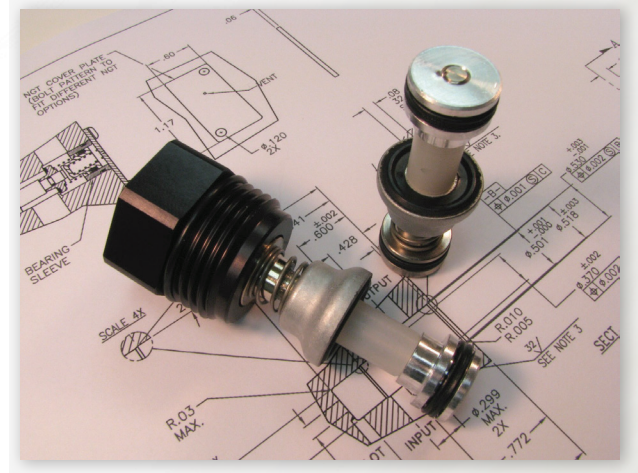
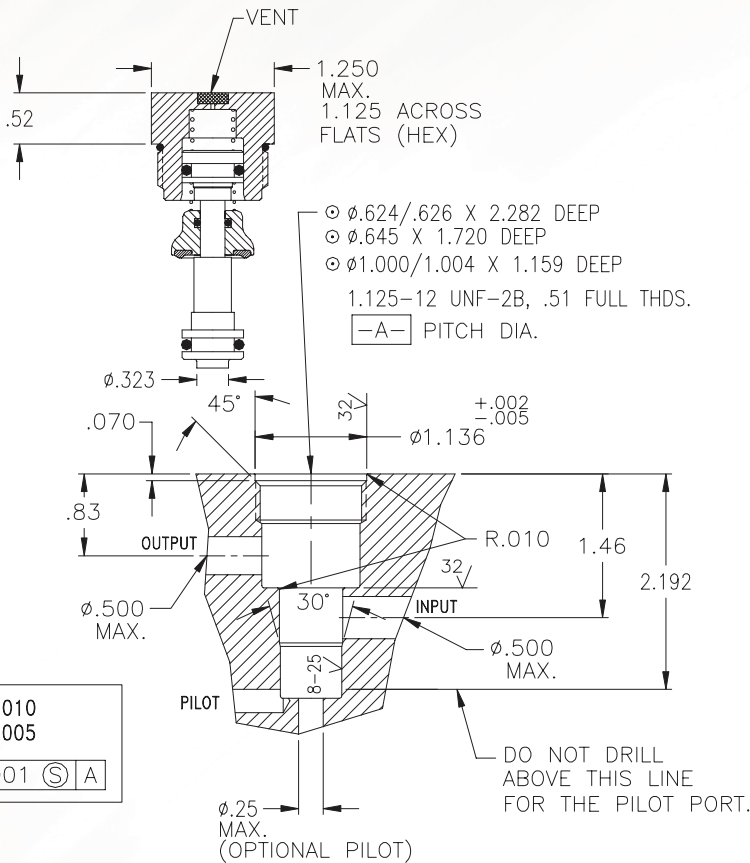


Pneumatic Cartridge Valve for a Manifold, Cv=2.6



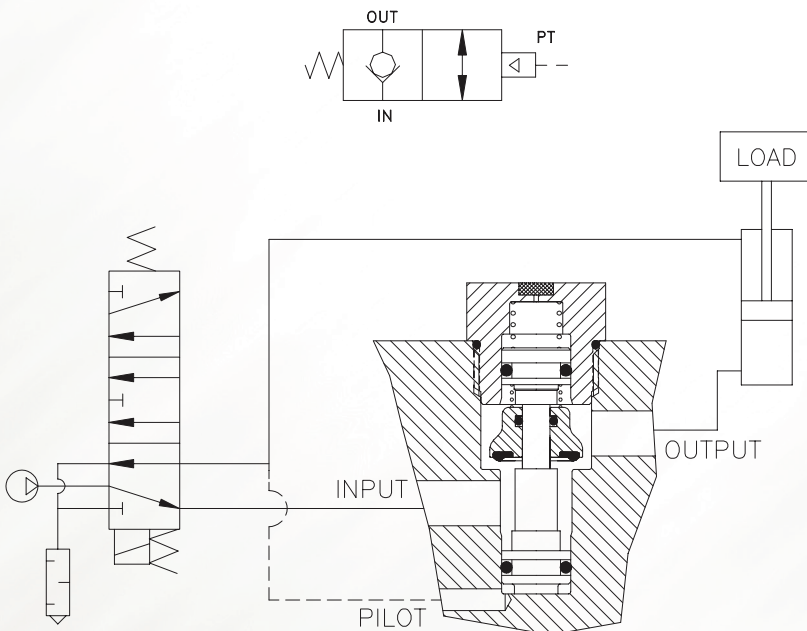
- High Flow
- High & Low Temp
- .000113 cc/min Leak Rate
- Insert From One Side
- Easy Repair

Basic Operation:

Lock your pneumatic device in position when a pressure drop or total loss of pressure occurs.

Operating Data:

- Max. Pressure: 150 psi
 Min. Pilot Pressure: 40 psi
 25 psi (see table)
 Leak Rate: .000113 cc/min
 Temp. Range: -20 to 150 F (Nitrile)
 30 to 350 F (FKM)
 -40 to 150 F (EPDM)
 Cycle Rate: 1 cyc./sec. max.
 Max. Flow Capacity (Cv): 2.6
 Cracking Pressure: 1-3 psi
 Service: Properly filtered dry air or lubricated air.



Description	Standard	Low Temp*	High Temp
Cartridge, End Cap & Spring	BC4MNAS	BC4MNAS40	BC4MNASV
Cartridge & Spring	BC4MN	BC4MNT40	BC4MNV

*No petroleum based lubricants. Comes lubricated with a silicone based lubricant. Add (-K18) to the model number for a lower pilot pressure (Ex: BC4MNAS-K18).