



Post Office Box 97  
 Benton Harbor, Michigan  
 Ph: 269/926-6171  
 Fax: 269/925-8288

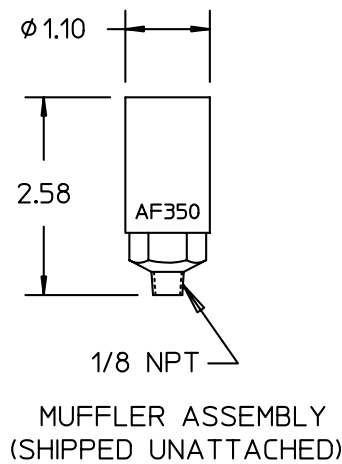
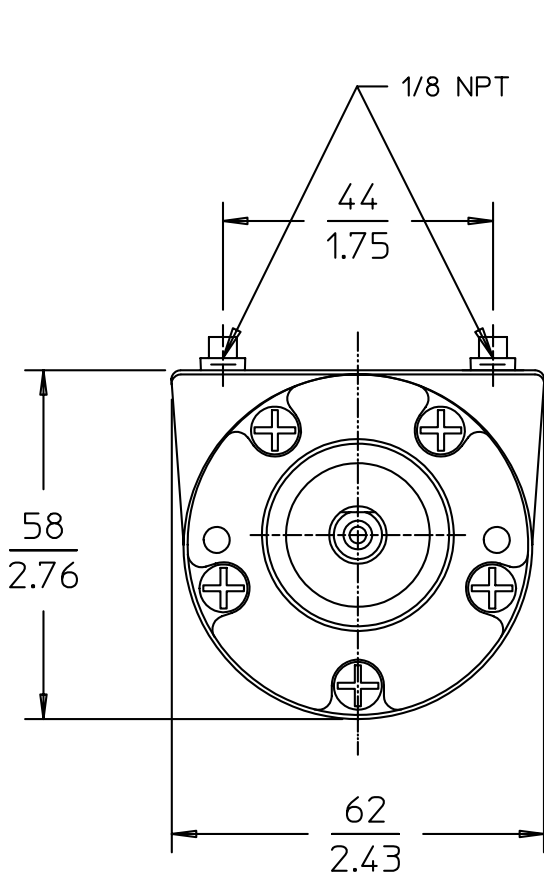
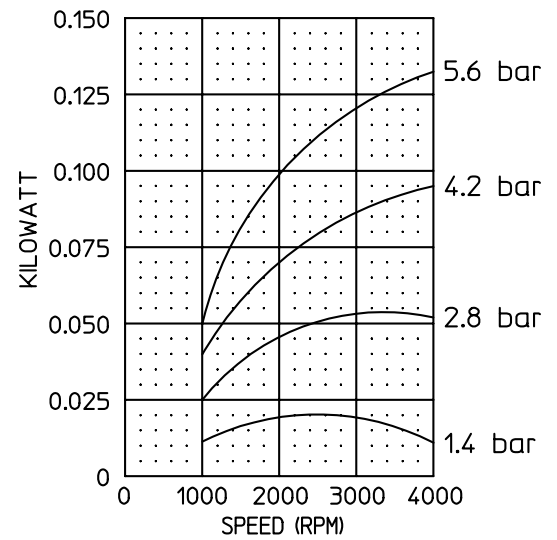
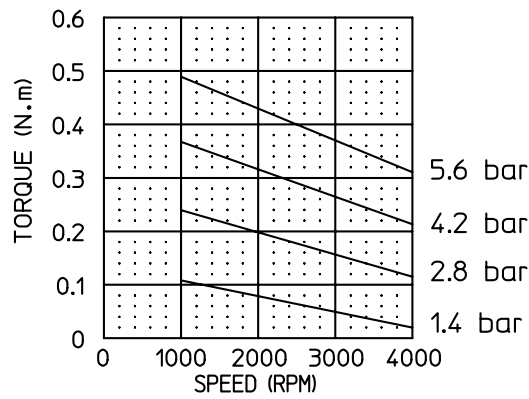
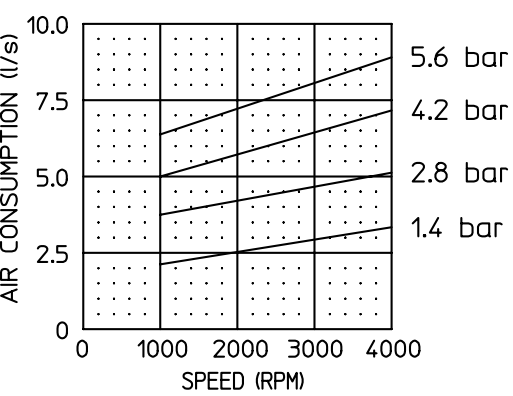
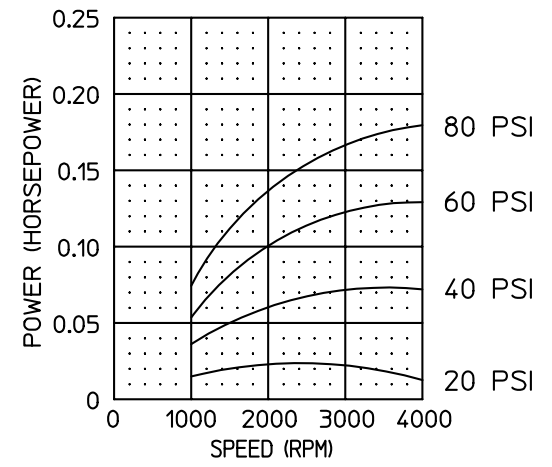
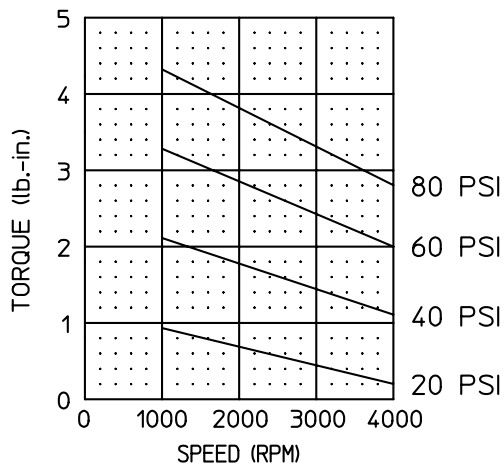
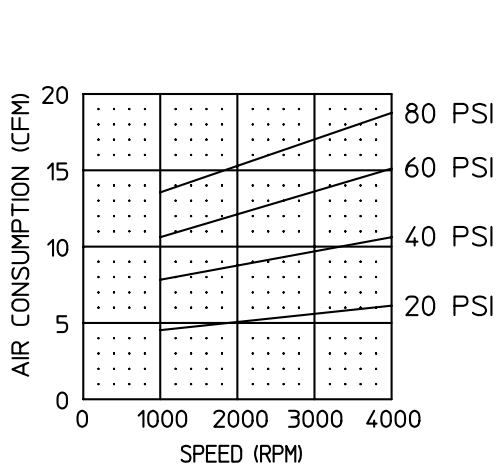
PART NUMBER: STD152  
 REVISION: K

# Product Specifications

Model Number	MAX. PRESS.		MAX. SPEED	HP	kW	Net Wt.	
	bar.	PSI				lbs.	kg
NL22-NCC-1	5.6	80	4,000 RPM	.18	0.13	3.0	1.4
NL22-NCW-2	5.6	80	4,000 RPM	.18	0.13	3.0	1.4

SOUND LEVEL 84 dB(A) MAX.  
 NORMAL AMBIENT +1° C. - 120° C.  
 RELATIVE HUMIDITY 0% - 100%  
 ENVIRONMENT HAZARDOUS AMBIENT COMBUSTIBLE  
GAS AND DUST +1°C TO +40°C

TECHNICAL DATA SUBJECT TO CHANGE WITHOUT NOTICE.  
 ALL DIMENSIONS ARE FOR REFERENCE ONLY.  
 CONFORMS TO EUROPEAN STANDARD EN13463-1  
 NON-ELECTRICAL EQUIPMENT FOR EXPLOSIVE  
 ATMOSPHERES GROUP 11 CAT 2 (GAS & DUST),  
 PROTECTED BY CONSTRUCTION (SURFACE TEMP. RATED 135C).



MUFFLER ASSEMBLY  
 (SHIPPED UNATTACHED)

