

# Product Specifications



Post Office Box 97  
Benton Harbor, Michigan  
Ph: 269/926-6171  
Fax: 269/925-8288

PART NUMBER: STD122  
REVISION: L

Model Number	MAX. PRESS.		MAX. SPEED	HP	kW	Net Wt.	
	bar.	PSI				lbs.	kg
4AM-NRV-22A	7.0	100	3,000 RPM	1.7	1.25	7	3.2
4AM-NRV-22B	7.0	100	3,000 RPM	1.7	1.25	7	3.2
4AM-NRV-22F	7.0	100	3,000 RPM	1.7	1.25	7	3.2
4AM-NRV-22G	7.0	100	3,000 RPM	1.7	1.25	7	3.2
4AM-NRV-54A	7.0	100	3,000 RPM	1.7	1.25	7	3.2
* 4AM-NRV-132	7.0	100	3,000 RPM	1.7	1.25	7	3.2
4AM-NRV-22H	7.0	100	3,000 RPM	1.7	1.25	7	3.2
4AM-NRV-165	7.0	100	3,000 RPM	1.7	1.25	7	3.2

TECHNICAL DATA SUBJECT TO CHANGE WITHOUT NOTICE. DIMENSIONS SHOWN ARE FOR REFERENCE ONLY. \* DENOTES INACTIVE UNIT

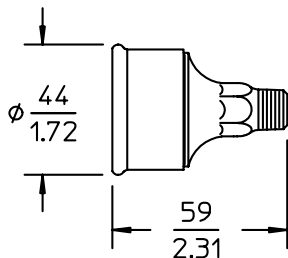
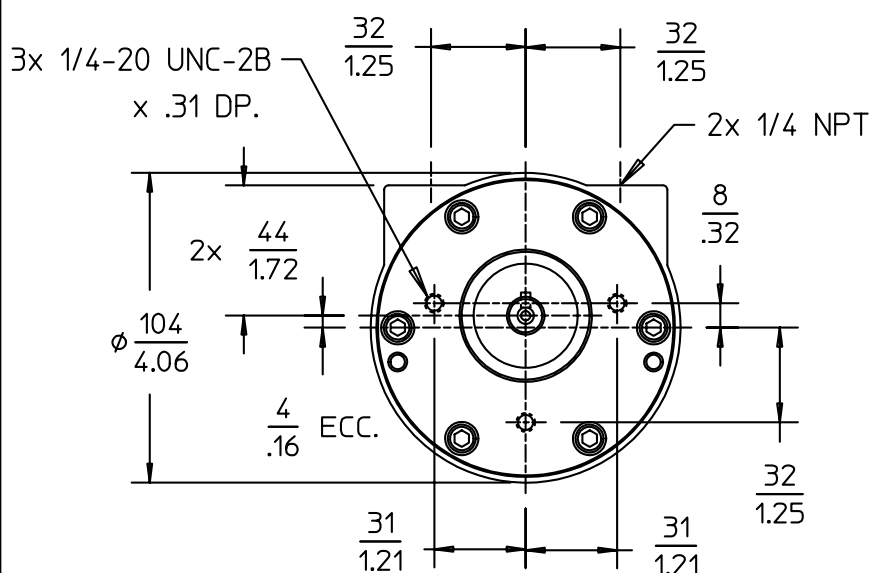
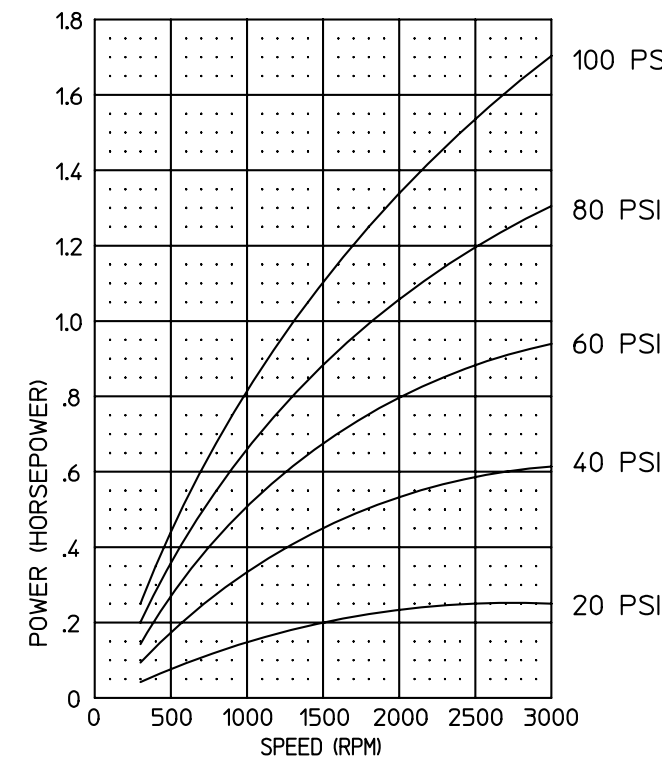
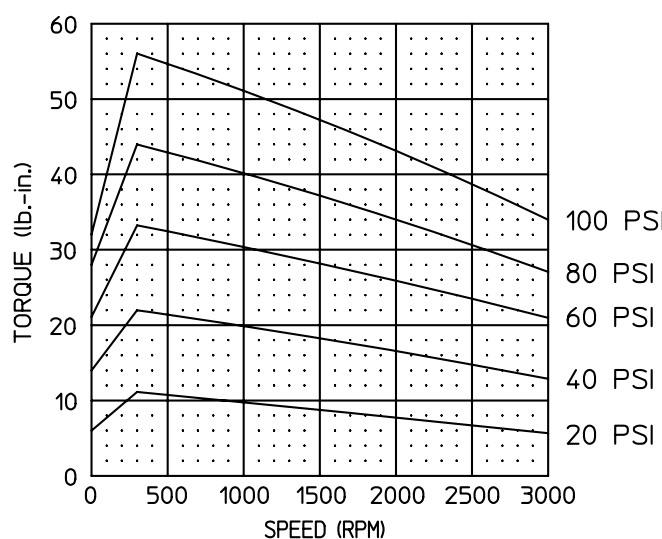
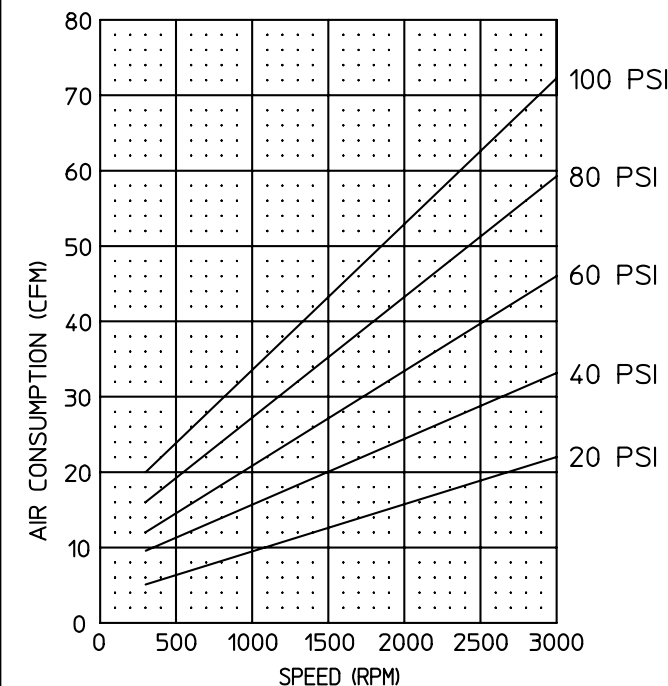
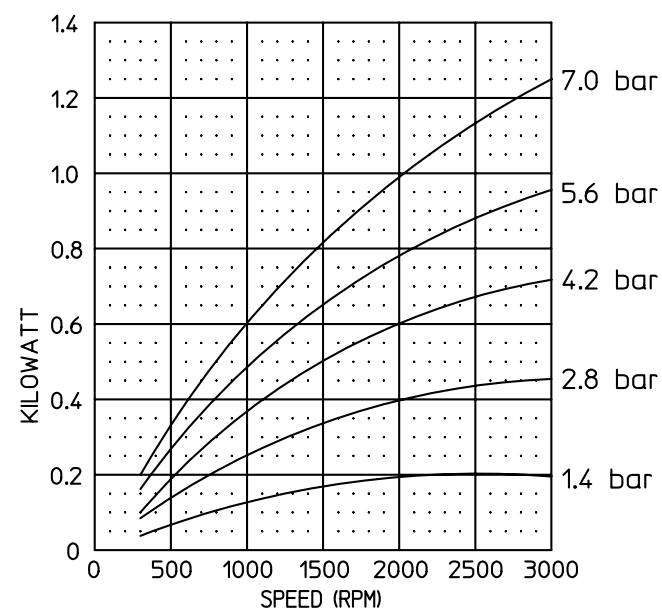
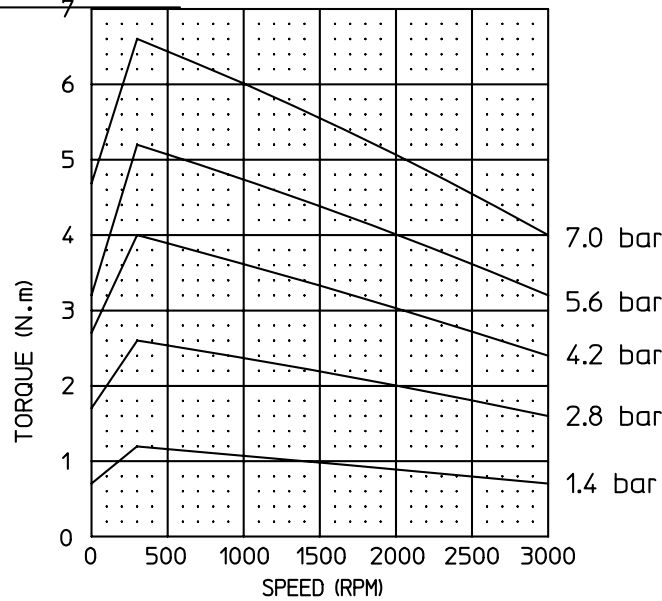
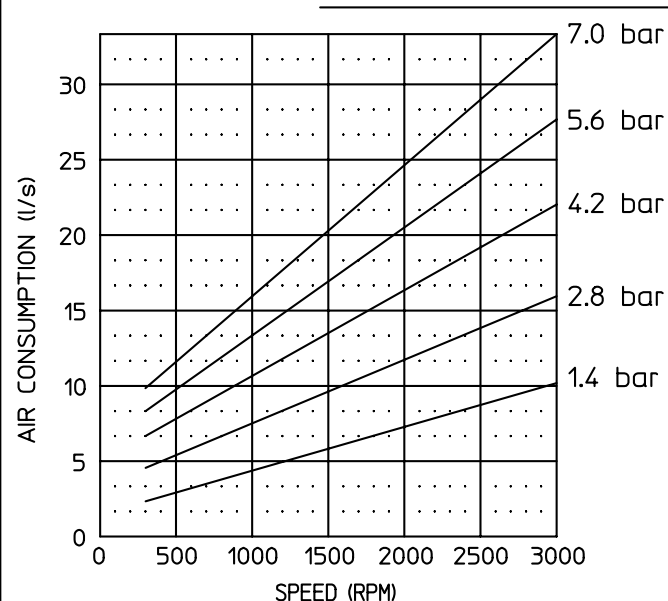
SOUND LEVEL 87 dB(A) MAX.

NORMAL AMBIENT +1° C. - 120° C.

RELATIVE HUMIDITY 0% - 100%

ENVIRONMENT HAZARDOUS AMBIENT COMBUSTIBLE GAS AND DUST +1° TO +40°C

CONFORMS TO EUROPEAN STANDARD EN13463-1  
NON-ELECTRICAL EQUIPMENT FOR EXPLOSIVE ATMOSPHERES GROUP 11 CAT 2 (GAS & DUST),  
PROTECTED BY CONSTRUCTION (SURFACE TEMP. RATED 135C).



MUFFLER ASM. (SHIPPED UNATTACHED)  
EXCEPT FOR 4AM-NRV-22A/4AM-NRV-22G/4AM-NRV-22H

