



Post Office Box 97
 Benton Harbor, Michigan
 Ph: 269/926-6171
 Fax: 269/925-8288

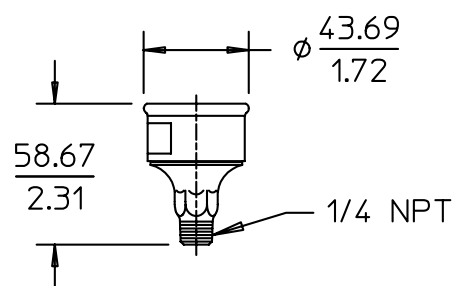
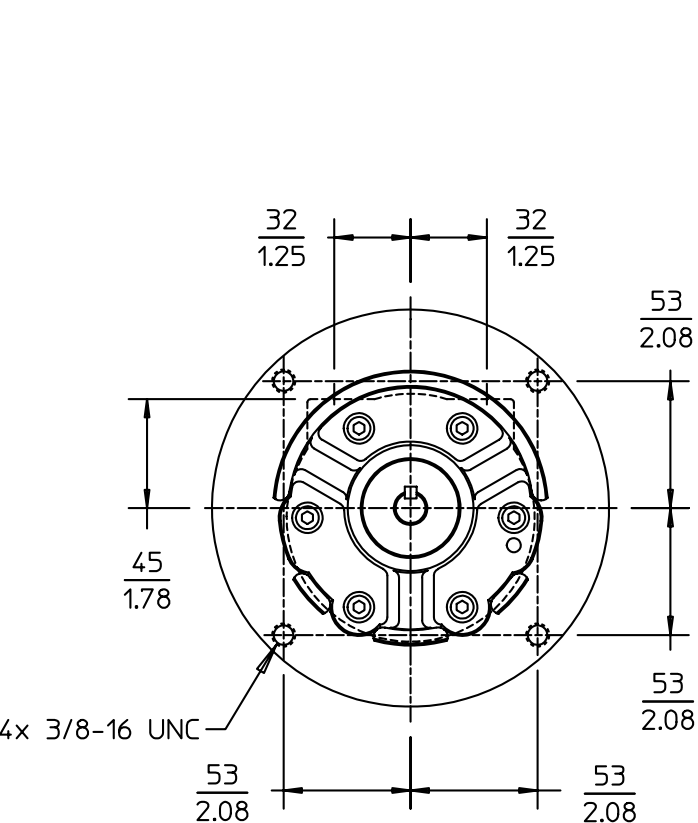
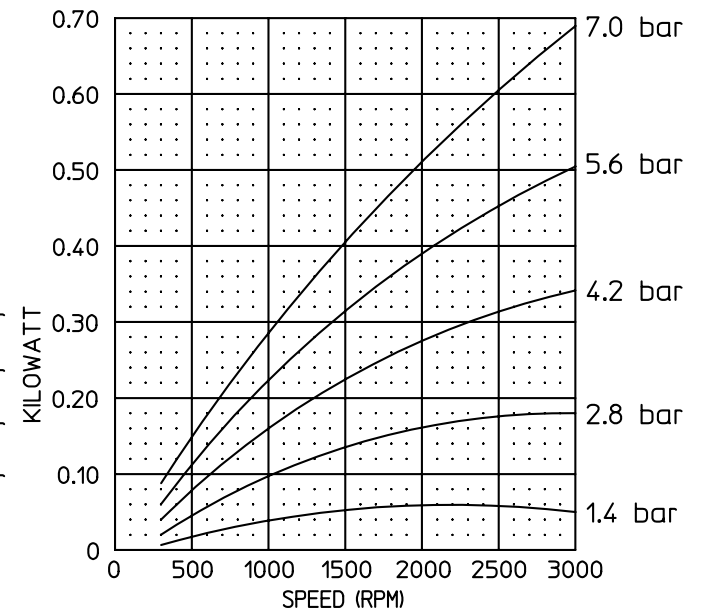
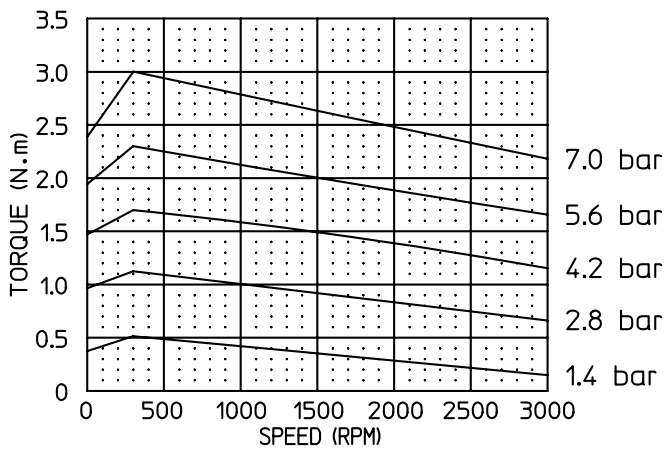
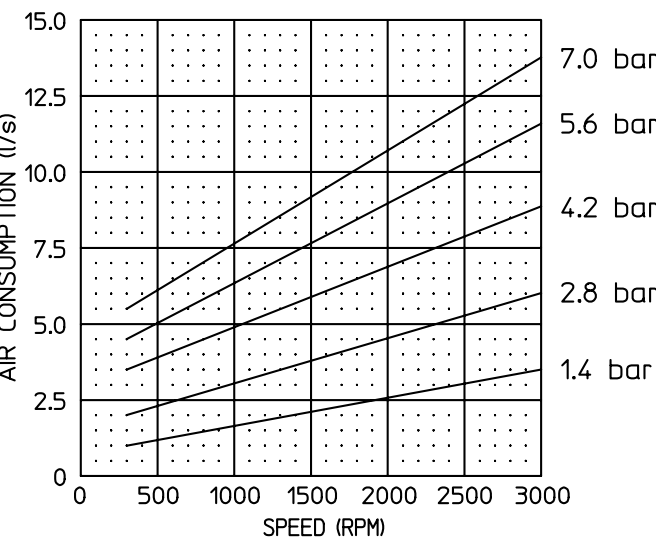
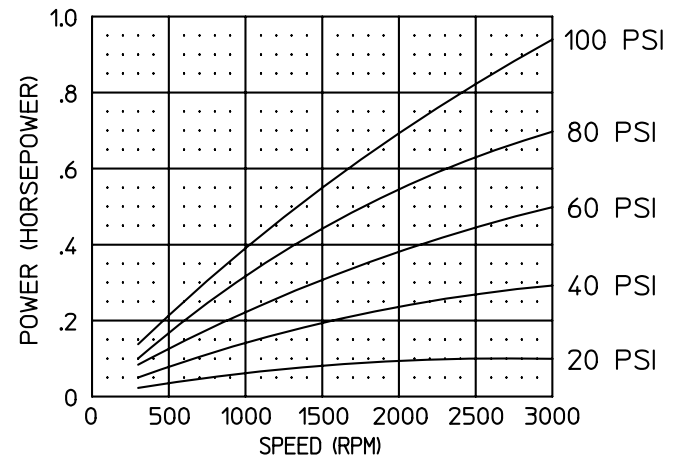
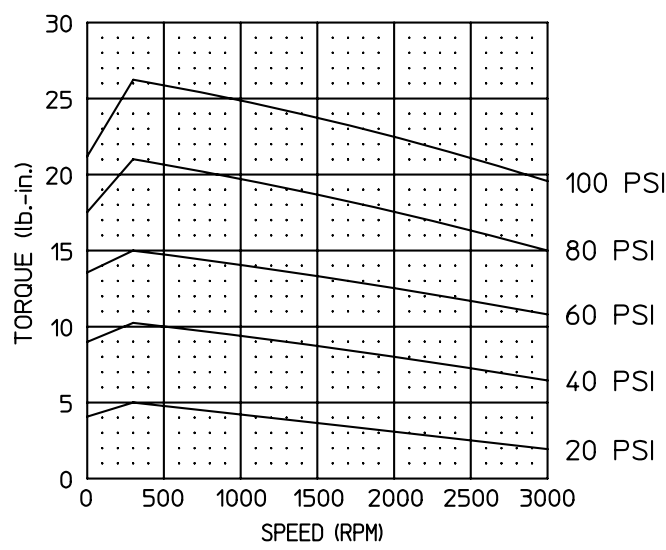
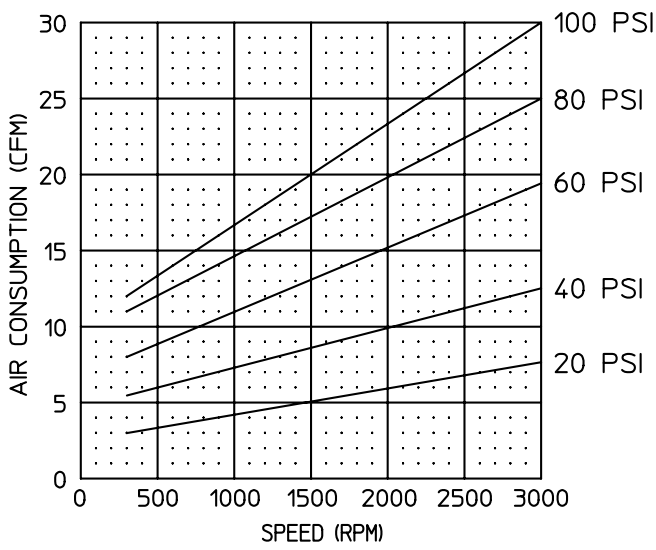
PART NUMBER: STD118
 REVISION: H

Product Specifications

Model Number	MAX. PRESS.		MAX. SPEED	HP	kW	Net Wt.	
	bar.	PSI				lbs.	kg
2AM-NCC-43A	7.0	100	3,000 RPM	.95	0.70	7.5	3.4
2AM-NCC-43B	7.0	100	3,000 RPM	.95	0.70	7.5	3.4

SOUND LEVEL 76 dba MAX. CONFORMS TO EUROPEAN STD. EN13463-1 NON-ELECTRICAL
 NORMAL AMBIENT 1° C. - 120° C. EQUIPMENT FOR EXPLOSIVE ATMOSPHERES GROUP 11, CAT. 2
 RELATIVE HUMIDITY 0% - 100% (GAS & DUST) PROTECTED BY CONSTRUCTION (SURFACE TEMP. RATING 135 C)
 ENVIRONMENT HAZARDOUS AMBIENT COMBUSTIBLE
GAS AND DUST +1C TO +40C

* TECHNICAL DATA SUBJECT TO CHANGE WITHOUT NOTICE.



MUFFLER ASM. - UNATTACHED

