



Post Office Box 97
Benton Harbor, Michigan
Ph: 269/926-6171
Fax: 269/925-8288

PART NUMBER: STD114
REVISION: K

Product Specifications

Model Number	MAX. PRESS.		MAX. SPEED	HP	kW	Net Wt.	
	bar.	PSI				lbs.	kg
2AM-FCC-1	7.0	100	3,000 RPM	.95	0.70	4.4	2.0
2AM-FCC-1B	7.0	100	3,000 RPM	.95	0.70	4.4	2.0
2AM-FCW-13	7.0	100	3,000 RPM	.95	0.70	4.4	2.0
* 2AM-FCW-13B	7.0	100	3,000 RPM	.95	0.70	4.4	2.0

SOUND LEVEL 76 dB(A) MAX.

NORMAL AMBIENT 1° C. - 120° C.

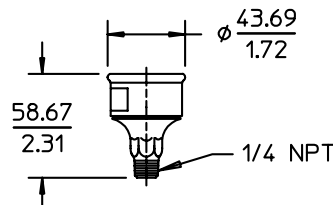
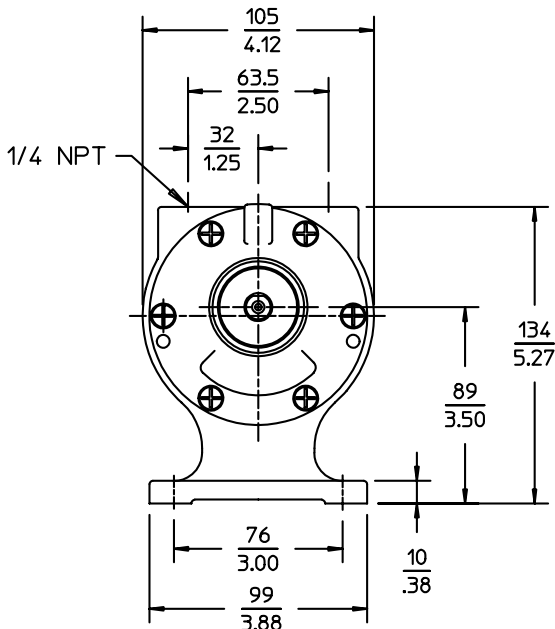
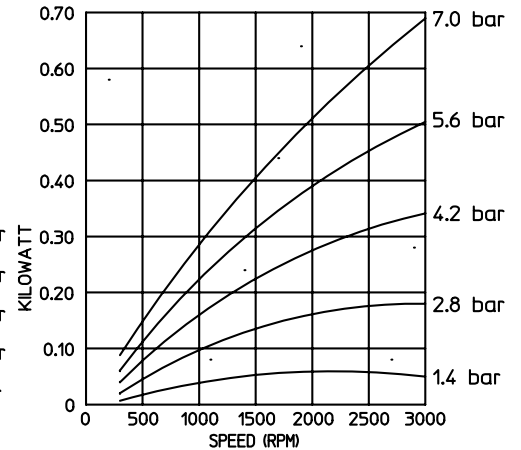
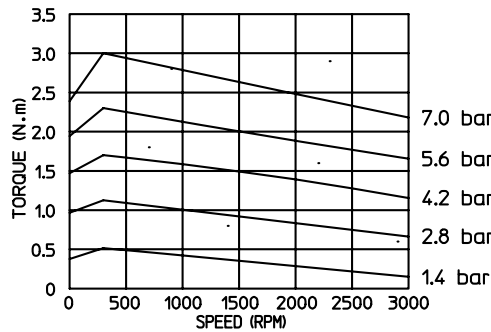
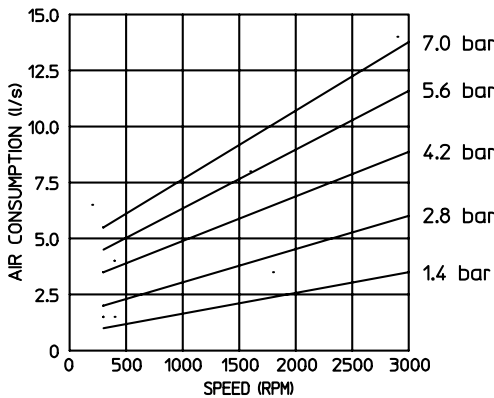
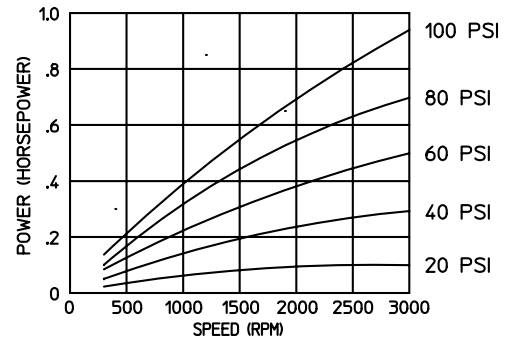
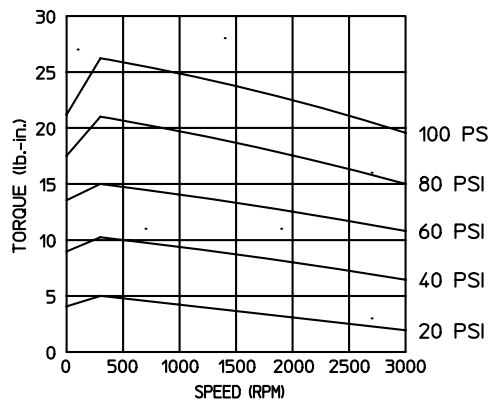
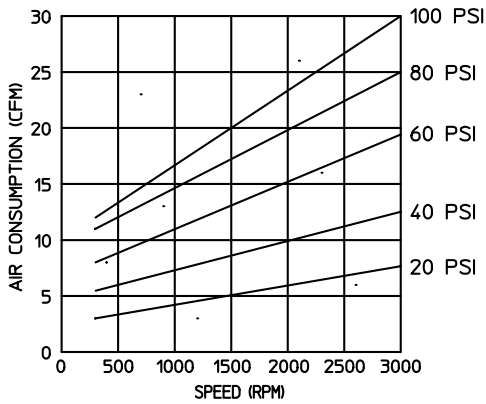
RELATIVE HUMIDITY 0% - 100%

ENVIRONMENT HAZARDOUS AMBIENT COMBUSTIBLE
GAS AND DUST +1C TO +40C

CONFORMS TO EUROPEAN STD. EN13463-1 NON-ELECTRICAL
EQUIPMENT FOR EXPLOSIVE ATMOSPHERES GROUP 11, CAT. 2
(GAS & DUST) PROTECTED BY CONSTRUCTION (SURFACE TEMP. RATING 135 C)

TECHNICAL DATA SUBJECT TO CHANGE WITHOUT NOTICE.
DIMENSIONS ARE FOR REFERENCE ONLY
UNLESS OTHERWISE TOLERANCED.

* DENOTES INACTIVE



MUFFLER ASM.
(SHIPPED UNATTACHED)

