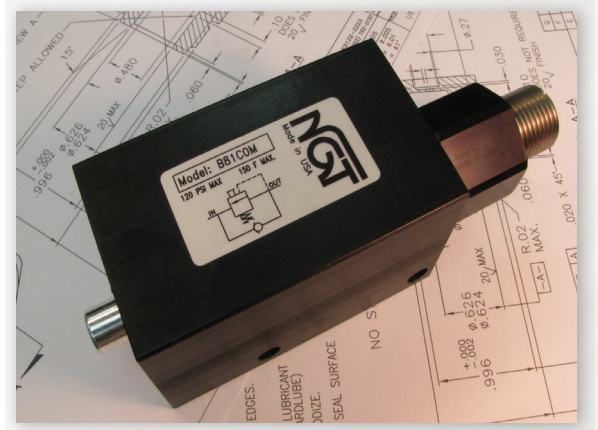
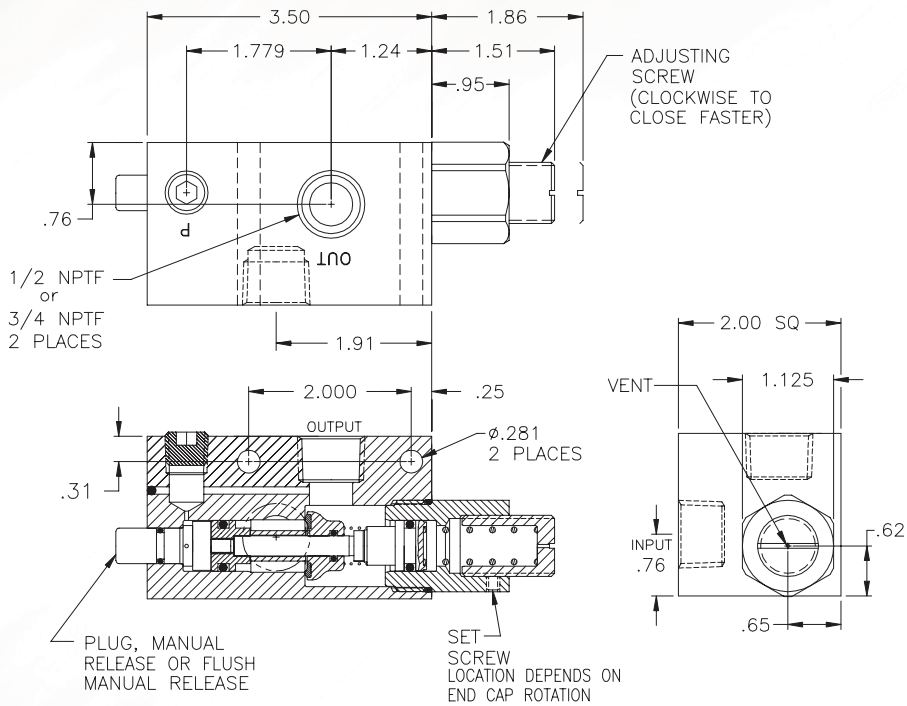


# 1/2 and 3/4 NPTF Pneumatic Counterbalance Valves



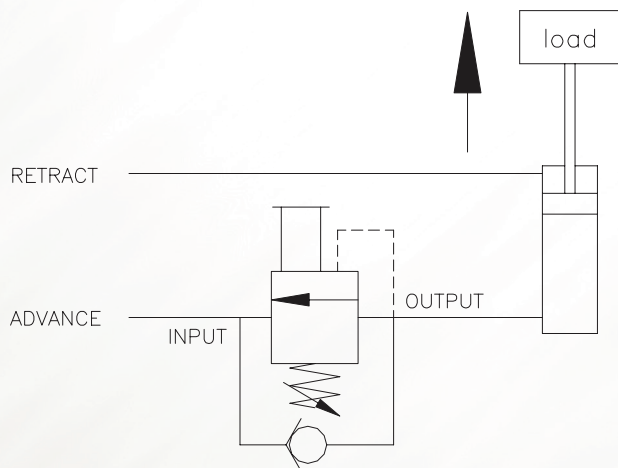
- Optional Manual Release
- .0000522 cc/min Leak Rate
- Adjustable Load Setting

## Basic Operation:

The counterbalance valve will hold a load in position until pressure or an external force is applied to move the load. Turning the adjusting screw clockwise will increase the load carrying capacity of the valve. Optional manual and flush manual release.

## Operating Data:

Max. Pressure:	120 psi
Leak Rate:	.0000522 cc/min.
Temp. Range:	30-150 F
Cycle Rate:	1 cyc./sec.
Flow Capacity (Cv):	3.8
Cracking Pressure:	1-2 psi
Service:	Properly filtered dry and lubricated air.



MODELS	1/2 NPFT	3/4 NPFT
No Manual Release	<b>B81C00</b>	<b>B121C00</b>
Manual Release	<b>B81C0M</b>	<b>B121C0M</b>
Flush Manual Release	<b>B81CFM</b>	<b>B121CFM</b>