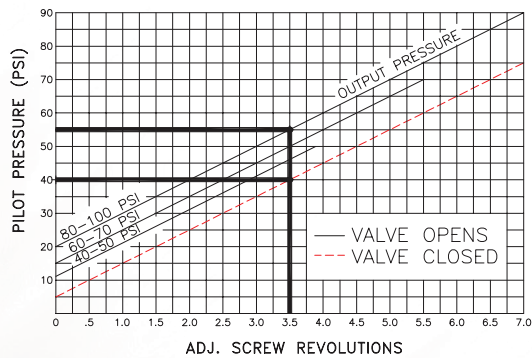
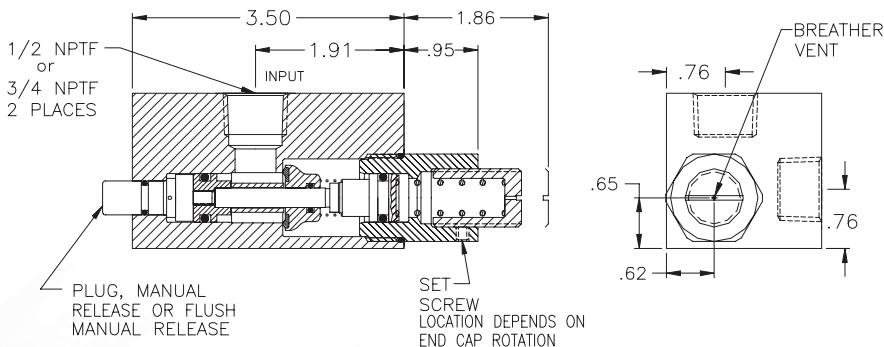
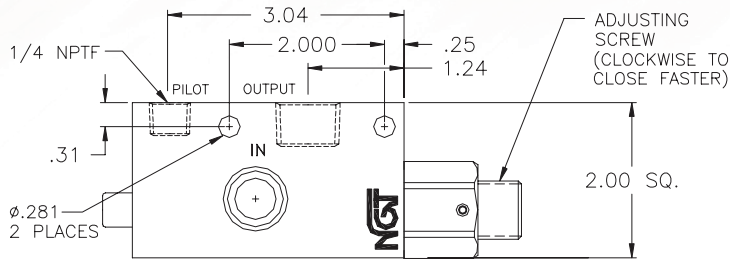
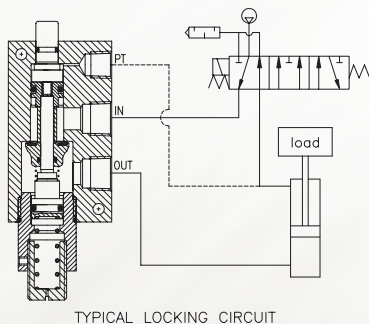


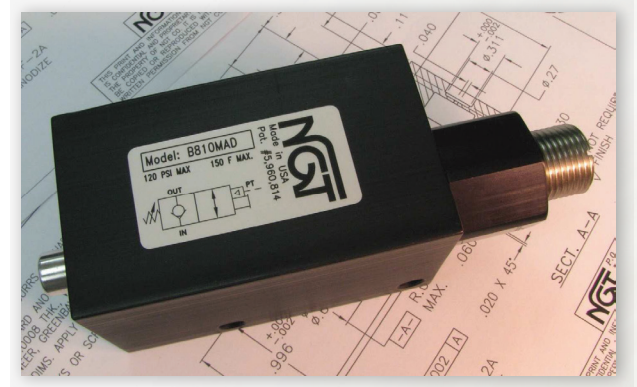
1/2 & 3/4 NPTF Adjustable 'Quick Stop' Pilot-Operated Check Valve for Faster Stops



EXAMPLE: With the output pressure or trapped pressure at 80 psi the pilot pressure to open the valve must be a minimum of 55 psi. The valve will close when the back pressure drops to 40 psi.



TYPICAL LOCKING CIRCUIT



- Adjustable Pilot Pressure
- Faster Stops
- .0000522 cc/min Leak Rate
- Manual Release Option

Basic Operation:

Locks any pneumatic device in position when a pressure drop or total loss of pressure occurs. Standard pilot-operated check valves will not close fast enough when back pressure is present in the pilot line. Increasing the spring pressure causes the valve to close before all the air exhausts, resulting in faster stops.

Operating Data:

- Max. Pressure: 120 psi
- Pilot Pressure: Adjustable
- Temp. Range: 30-150 F
- Cycle Rate: 1 cyc./sec.
- Flow Capacity (Cv): 3.8 max.
- Cracking Pressure: 1-2 psi
- Service: Properly filtered and lubricated air.

MODELS	1/2 NPTF	3/4 NPTF
No Manual Release	B8100AD	B12100AD
Manual Release	B810MAD	B1210MAD
Flush Manual Release	B81FMAD	B121FMAD