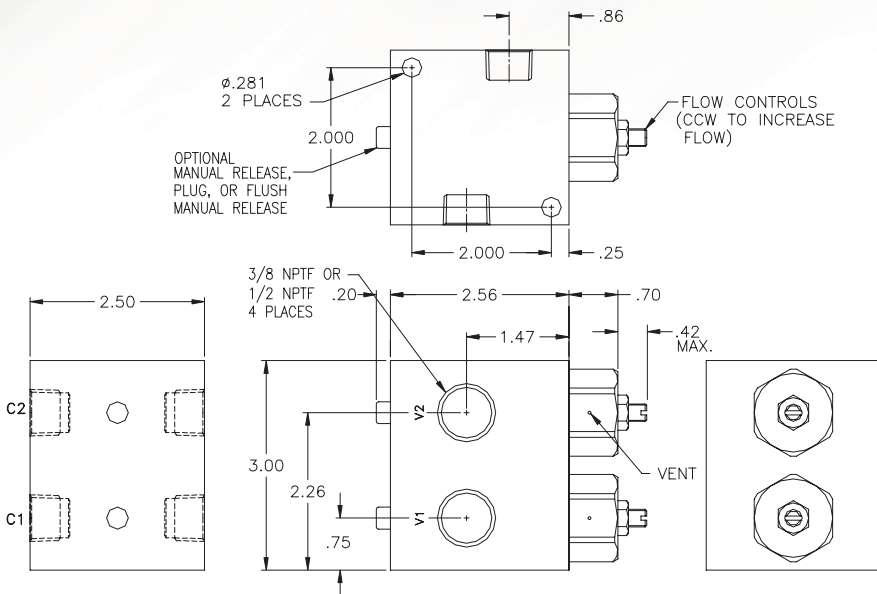
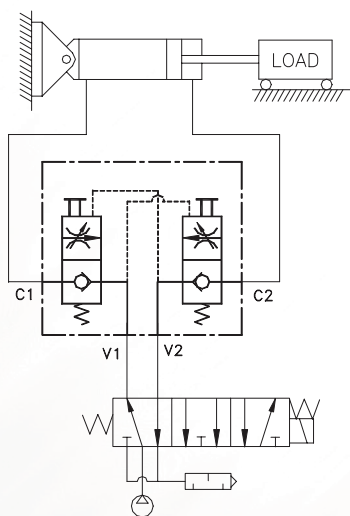
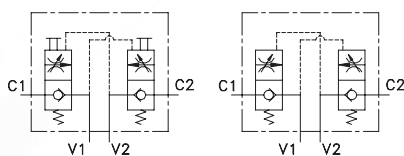


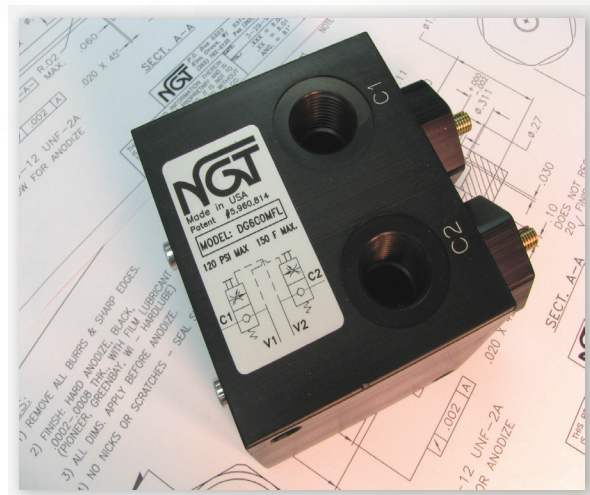
# 3/8 & 1/2 NPTF & 3/8 BSPP Dual Check Valves with Flow Controls



DIMS. APPLY TO BOTH 3/8 & 1/2 NPTF MODELS



No. of Turns	Equivalent Dia (in.)	No. of Turns	Equivalent Dia (in.)
.25	.15	1.75	.40
.50	.21	2.00	.43
.75	.26	2.25	.45
1.0	.30	2.50	.48
1.25	.34	2.75	.50
1.50	.37		



- Dual Manual Release
- .0000522 cc/min Leak Rate
- G.375 BSPP In Stock
- Lower Loads Slowly

## Basic Operation:

In the event of a pressure loss this unique valve maintains cylinder position by locking air in both cylinder ports. The internal flow controls meter air out of the cylinder. A manual release is available to release trapped air from both ports independently.

## Operating Data:

- Max. Pressure: 150 psi
- Min Pilot Pressure: 40
- 25 (see table '-K18')
- Temp. Range: -20 -150 F
- Adv & Retract Ratio: The pressure ratio of advance/retract or retract/advance should not be greater than 2.
- Cycle Rate: 1 cyc./sec. max.
- Flow Capacity (Cv): 3.8 max.
- Cracking Pressure: 1-2 psi
- Service: Properly filtered dry air or lubricated air.

MODELS	3/8 NPTF	3/8 BSPP	1/2 NPTF
No Manual Release	D6C00FL	DG6C00FL	D8C00FL
Manual Release	D6C0MFL	DG6C0MFL	D8C0MFL
Flush Manual Release	D6CFMFL	DG6CFMFL	D8CFMFL

For 25 psi pilot pressure add (-K18) to the model # (ex. D6C0MFL-K18)