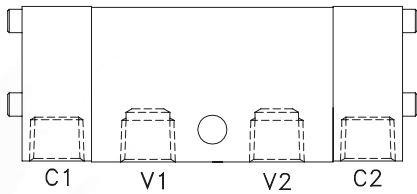
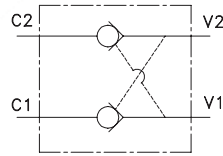
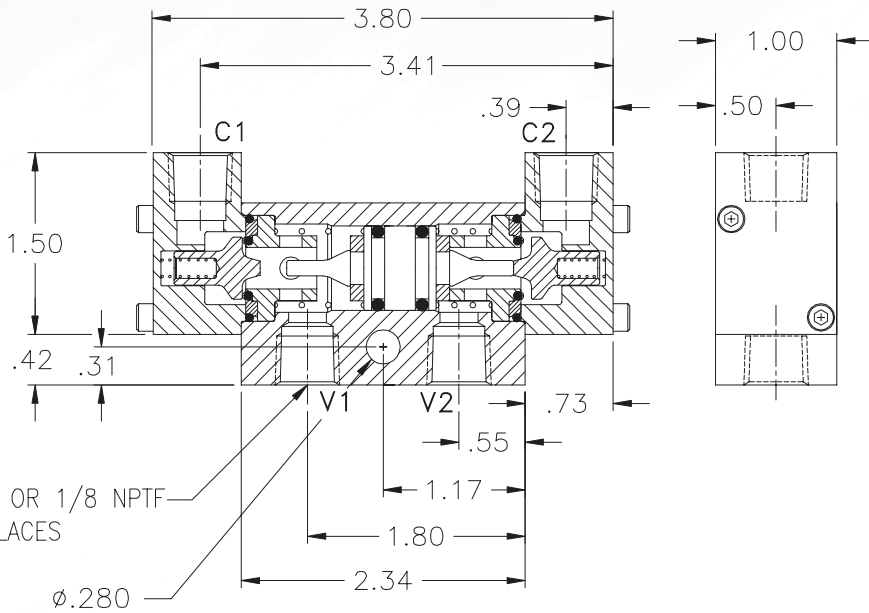
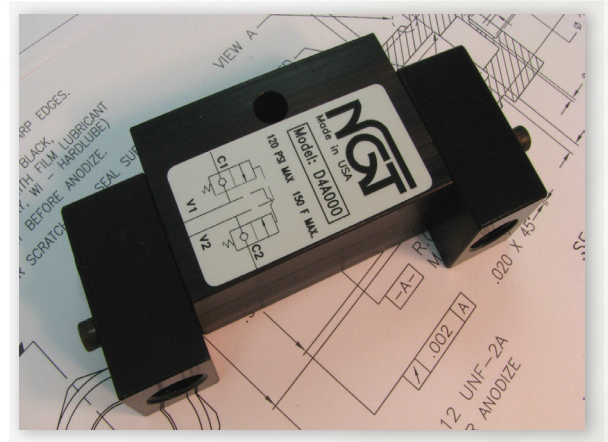
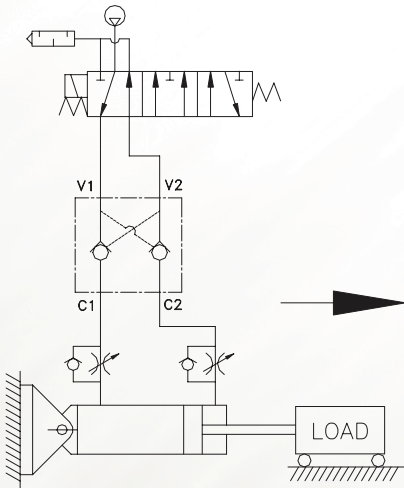


1/4 NPTF Dual Check Valves



All ports on one side



- Air Tight Locking
- Small Package
- Faster Stops
- Less Bounce

Basic Operation:

In the event of a pressure loss this unique valve maintains cylinder position by locking air in both cylinder ports. Eliminate drift due to leaky spool valves.

Operating Data:

Min / Max. Pressure:	20-120 psi
Temp. Range:	30-150 F
Cycle Rate:	1 cyc./sec. max.
Flow Capacity (Cv):	1.5
Cracking Pressure:	1-2 psi
Service:	Properly filtered dry air or lubricated air.

MODEL NO.	1/4 NPTF
Ports Opposite Sides	D4A000
Ports Same Side	D4AS00