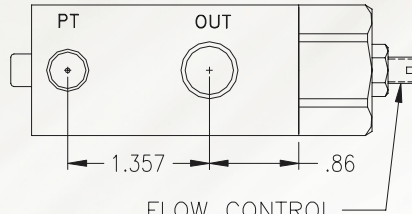
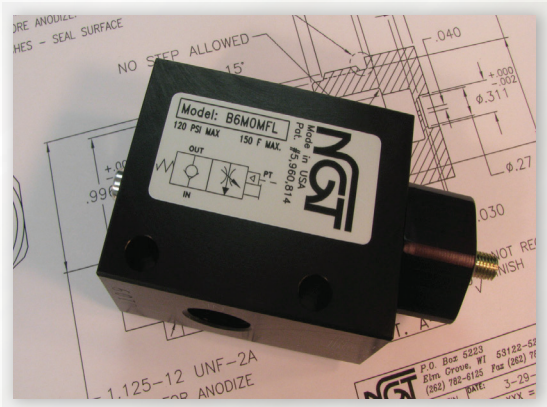
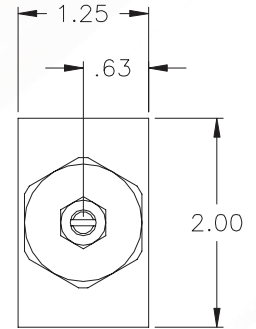
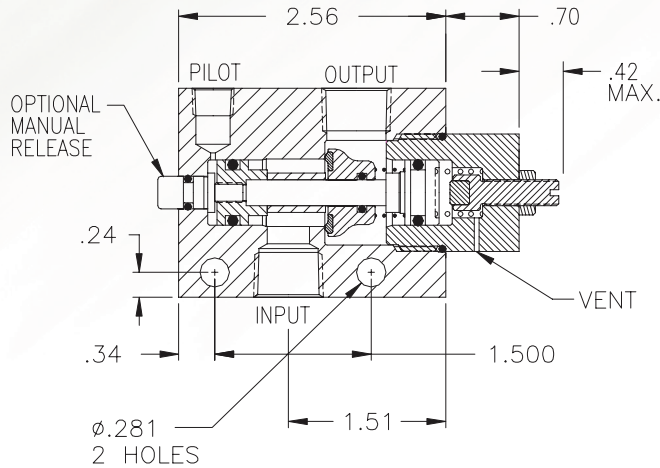


1/4, 3/8 NPTF & G1/4, G3/8 BSPP Pilot Operated Check Valves with Flow Controls Fast Advance and Slow Retract - Avoid Crash Landings



FLOW CONTROL
(CCW TO INCREASE FLOW)

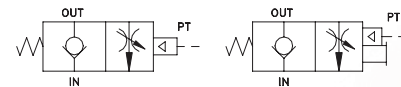
PORT SIZES		
PILOT	INPUT	OUTPUT
1/8 NPTF	1/4 NPTF	1/4 NPTF
1/8 NPTF	3/8 NPTF	3/8 NPTF
G1/4 BSPP	G1/4 BSPP	G1/4 BSPP
G1/8 BSPP	G3/8 BSPP	G3/8 BSPP



- Avoid Crash Landings
- Optional Manual Release
- .000052 cc/min Leak Rate
- Non-Ferrous Available

Basic Operation:

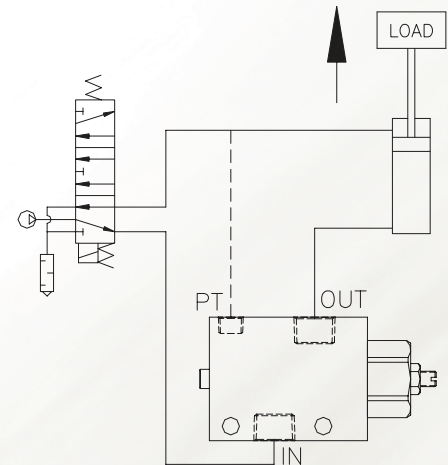
Hold position when a pressure drop or total loss of pressure occurs. Flow control meters air from the output to the input port. Manual release to exhaust trapped air before maintaining the system (OSHA Requirement).



Operating Data:

- Max. Pressure: 150 psi
 Min. Pilot Press.: 40 psi
 25 psi (see table)
 Temp. Range: 30 - 150 F
 Cycle Rate: 1 cycles/sec max.
 Flow Capacity (Cv): 2.6 max
 Cracking Pressure: 1-2 psi
 Service: Properly filtered dry or lubricated air.

No. of Turns	Equivalent Dia (in.)
.25	.15
.50	.21
.75	.26
1.0	.30
1.25	.34
1.50	.37
1.75	.40



Model No.	1/4 NPTF	3/8 NPTF	1/4 BSPP	3/8 BSPP
No Manual Release	B4M00FL	B6M00FL	BG4M00FL-1	BG6M00FL
Manual Release	B4M0MFL	B6M0MFL	BG4M0MFL-1	BG6M0MFL
Flush Manual Release	B4MFMFL	B6MFMFL	BG4MFMFL-1	BG6MFMFL

For a lower pilot pressure add (-K18) to the model # (ex. B4M0MFL-K18).