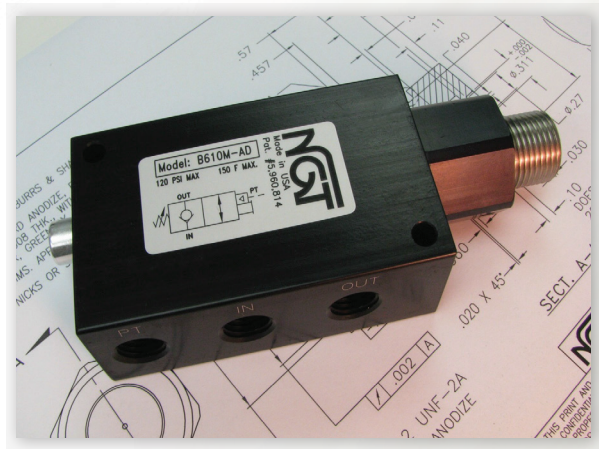
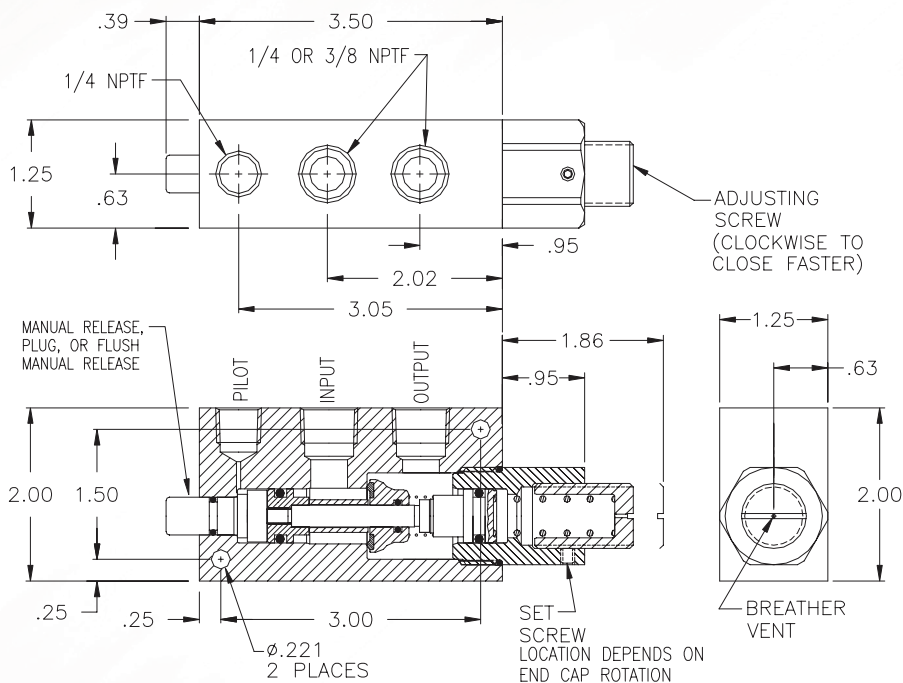


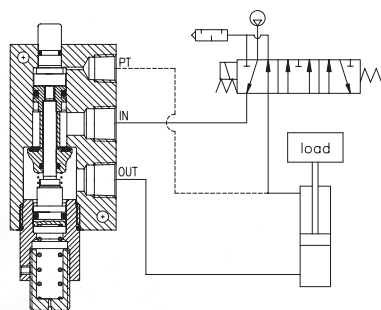
1/4 & 3/8 NPTF Adjustable 'Quick Stop' Pilot-Operated Check Valve for Faster Stops



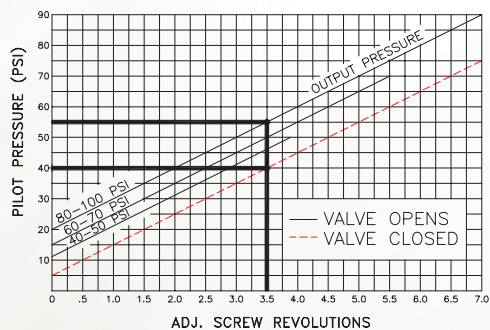
- Adjustable Pilot Pressure
- Faster Stops
- .0000522 cc/min Leak Rate
- Manual Release Option

Basic Operation:

Locks any pneumatic device in position when a pressure drop or total loss of pressure occurs. Standard pilot-operated check valves will not close fast enough when back pressure is present in the pilot line. Increasing the spring pressure causes the valve to close before all the air exhausts, resulting in faster stops.



TYPICAL LOCKING CIRCUIT



EXAMPLE: With the output pressure or trapped pressure at 80 psi the pilot pressure to open the valve must be a minimum of 55 psi. The valve will close when the back pressure drops to 40 psi.

Operating Data:

- Max. Pressure: 120 psi
- Pilot Pressure: Adjustable
- Temp. Range: 30-150 F
- Cycle Rate: 1 cyc./sec.
- Flow Capacity (Cv): 2.6
- Cracking Pressure: 1-2 psi
- Service: Properly filtered dry or lubricated air.

Model No.	1/4 NPTF	3/8 NPTF
No Manual Release	B4100AD	B6100AD
Manual Release	B410MAD	B610MAD
Flush Manual Release	B41FMAD	B61FMAD