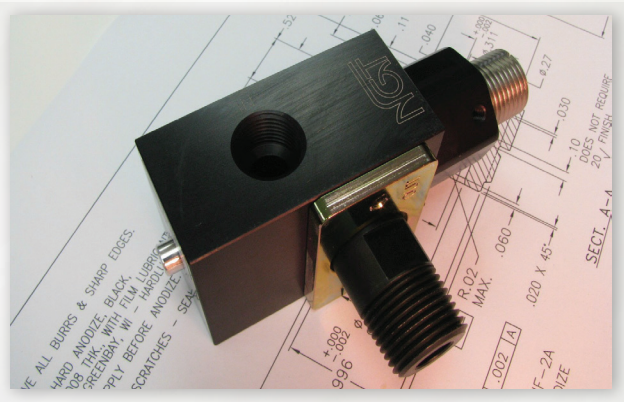


# 1/4, 3/8 and 1/2 NPTF Swivel Mount Pilot-Operated Check Valves with 'Quick Close' Adjustment



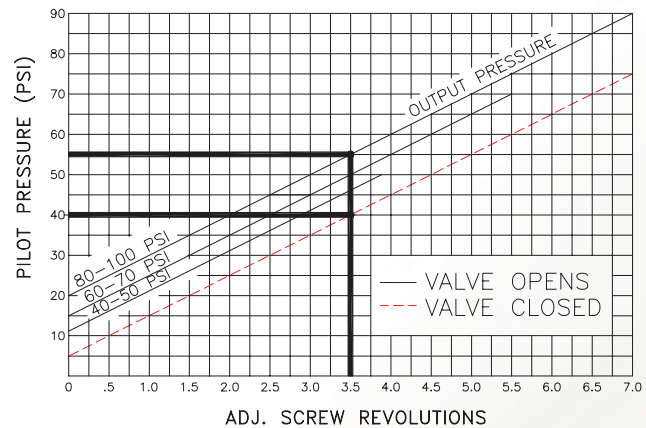
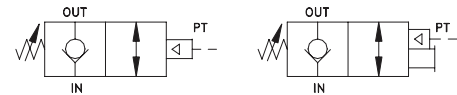
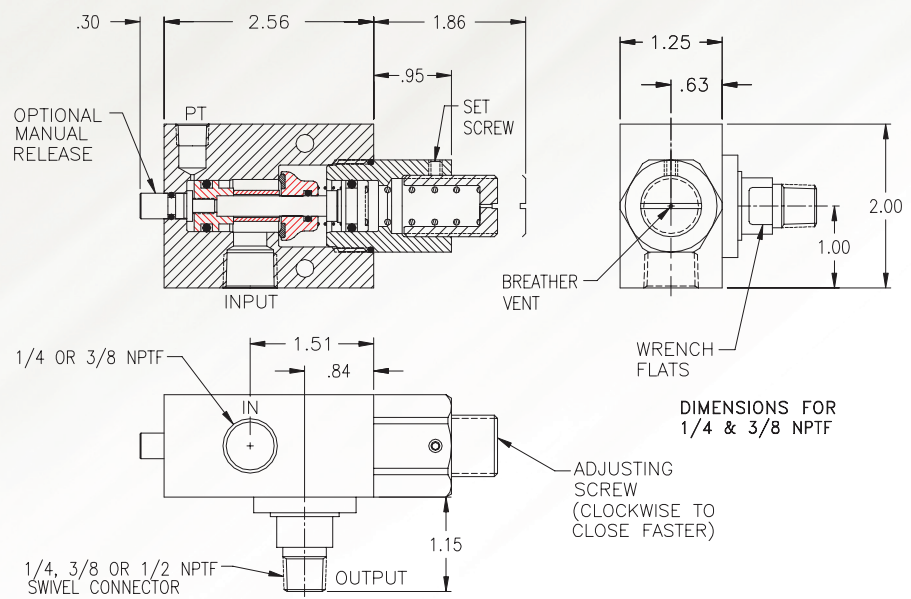
- Optional Manual Release
- .0000522 cc/min Leak Rate
- 'Quick Close' Operation
- Direct Mounting Swivel

## Basic Operation:

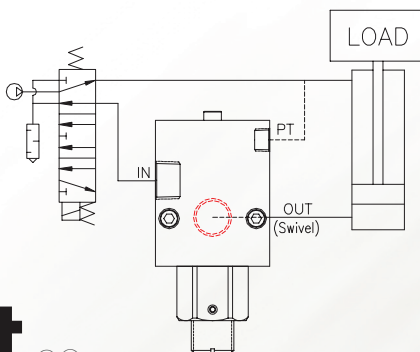
Locks any pneumatic device in position when a pressure drop or total loss of pressure occurs. Standard pilot-operated check valves will not close fast enough when back pressure is present in the pilot line. Increasing the spring pressure causes the valve to close at a higher pilot pressure or before all the air exhausts, resulting in faster stops. Optional manual and flush manual.

## Operating Data:

Max. Pressure: 120 psi  
 Min. Pilot Pressure: Adjustable  
 Temp. Range: 30-150 F  
 Cycle Rate: 1 cyc./sec.  
 Flow Capacity (Cv): 2.6  
 Cracking Pressure: 1-2 psi  
 Service: Properly filtered and lubricated air.



EXAMPLE: With the output pressure or trapped pressure at 80 psi the pilot pressure to open the valve must be a minimum of 55 psi. The valve will close when the back pressure drops to 40 psi.



MODELS	1/4 Swivel	3/8 Swivel	1/2 Swivel
<b>1/4 NPTF Input Port</b>			
No Manual Release	<b>B4S00AD-25</b>	<b>B4S00AD-38</b>	<b>B4S00AD-50</b>
Manual Release	<b>B4S0MAD-25</b>	<b>B4S0MAD-38</b>	<b>B4S0MAD-50</b>
Flush Manual Release	<b>B4SFMAD-25</b>	<b>B4SFMAD-38</b>	<b>B4SFMAD-50</b>
<b>3/8 NPTF Input Port</b>			
No Manual Release	<b>B6S00AD-25</b>	<b>B6S00AD-38</b>	<b>B6S00AD-50</b>
Manual Release	<b>B6S0MAD-25</b>	<b>B6S0MAD-38</b>	<b>B6S0MAD-50</b>
Flush Manual Release	<b>B6SFMAD-25</b>	<b>B6SFMAD-38</b>	<b>B6SFMAD-50</b>