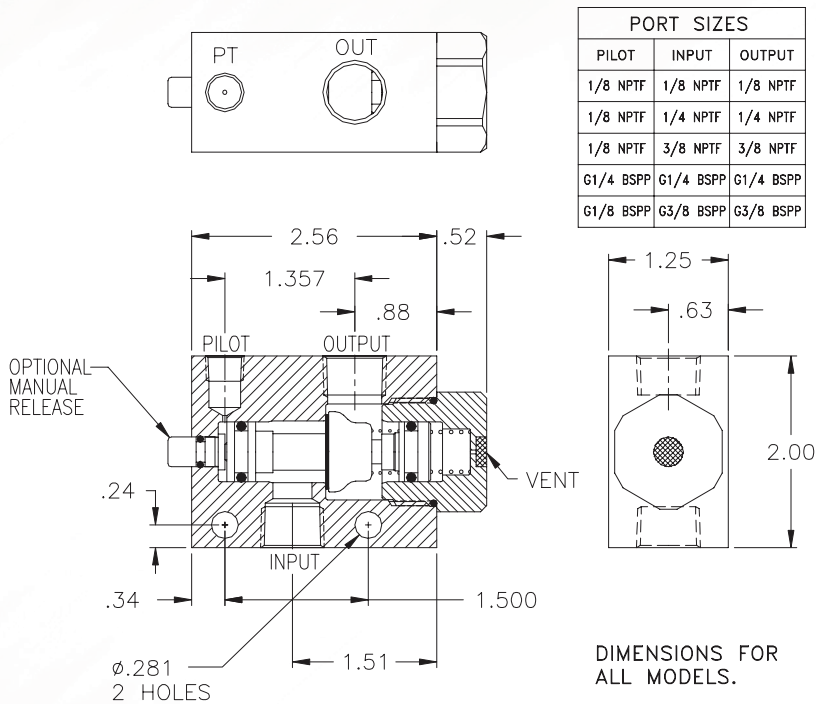
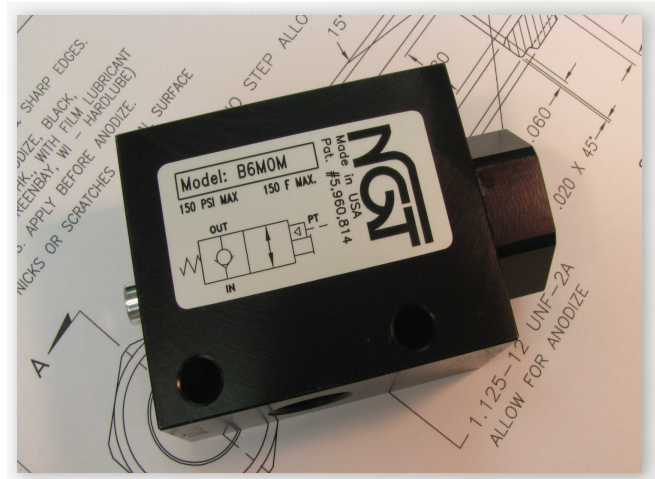


# 1/8, 1/4, 3/8 NPTF & G1/4, G3/8 BSPP Balanced Pilot Operated Check Valves

Patent 5960814



PORT SIZES		
PILOT	INPUT	OUTPUT
1/8 NPTF	1/8 NPTF	1/8 NPTF
1/8 NPTF	1/4 NPTF	1/4 NPTF
1/8 NPTF	3/8 NPTF	3/8 NPTF
G1/4 BSPP	G1/4 BSPP	G1/4 BSPP
G1/8 BSPP	G3/8 BSPP	G3/8 BSPP



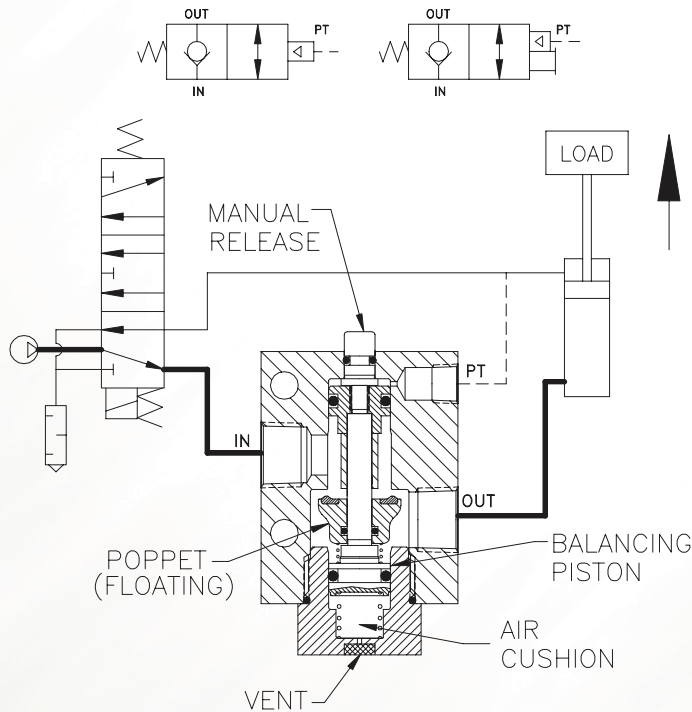
- Immediate Checking
- Optional Manual Release
- .000052 cc/min Leak Rate
- 316 Stainless Available
- Low & High Temp
- G1/4 & G3/8 BSPP In Stock
- Non-Ferrous In Stock

## Basic Operation:

Lock your pneumatic device in position when a pressure drop or total loss of pressure occurs. Manual release for exhausting trapped air before maintaining the system (OSHA Requirement).

## Operating Data:

Max. Pressure:	150 psi
Min. Pilot Pressure:	40 psi
	25 psi (see table '-K18')
Leak Rate:	.0000522 cc/min
Temp. Range:	30-150 F
	30-350 F (see table '-V')
	-40 -150 F (see table '-T40')
Cycle Rate:	1 cyc./sec. max.
Flow Capacity (Cv):	1.7 (1/8 model)
	2.6 (1/4 and 3/8 models)
Cracking Pressure:	1-2 psi
Service:	Properly filtered dry air or lubricated air.



Model No.	1/8 NPTF	1/4 NPTF	3/8 NPTF	1/4 BSPP	3/8 BSPP
No Manual Release	<b>B2M00</b>	<b>B4M00</b>	<b>B6M00</b>	<b>BG4M00-1</b>	<b>BG6M00</b>
Manual Release	<b>B2M0M</b>	<b>B4M0M</b>	<b>B6M0M</b>	<b>BG4M0M-1</b>	<b>BG6M0M</b>
Flush Manual Release	<b>B2MFM</b>	<b>B4MFM</b>	<b>B6MFM</b>	<b>BG4MFM-1</b>	<b>BG6MFM</b>

For high temp seals add (-V) to the model # (ex. B2M0M-V).  
 For low temp seals add (-T40) to the model # (ex. B2M0M-T40).  
 For a lower pilot pressure add (-K18) to the model # (ex. B2M0M-K18).  
 For the non-ferrous model add (-NF) to the model # (ex. B2M0M-NF).