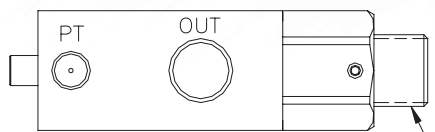
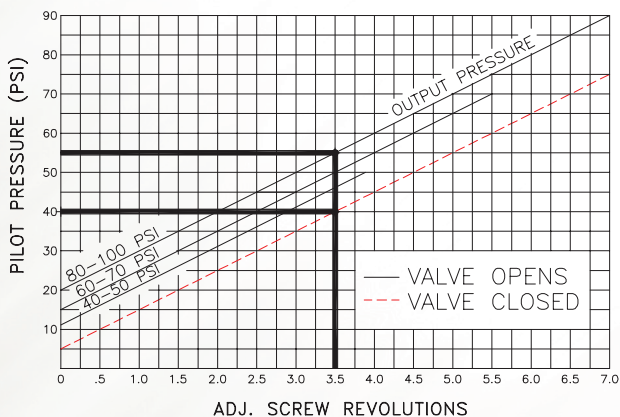
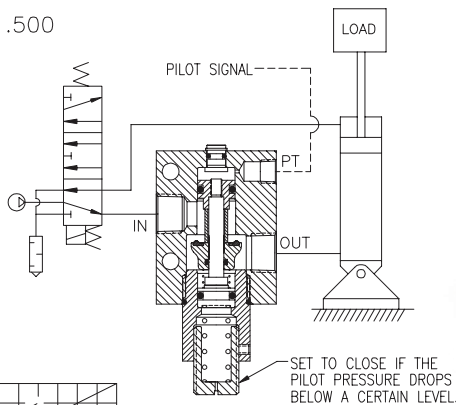
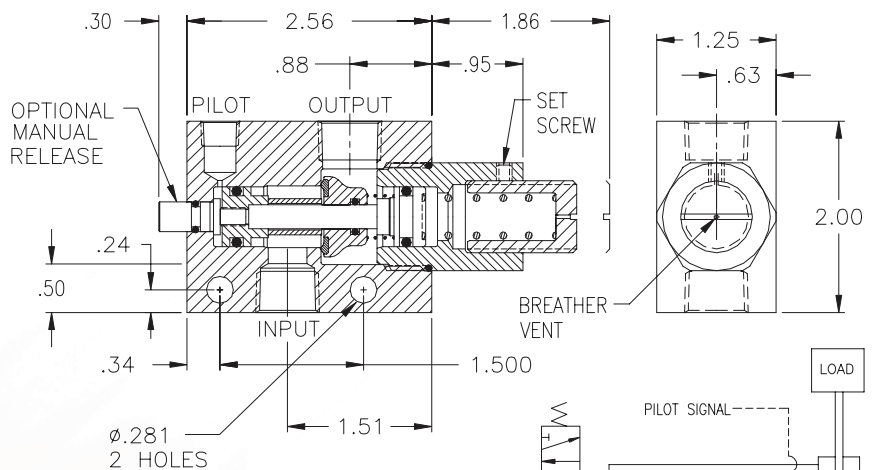


1/8, 1/4, 3/8 NPTF & G1/4, G3/8 BSPP Adjustable Pilot-Operated Check Valve for Faster Stops or to Close at a Set Pressure.

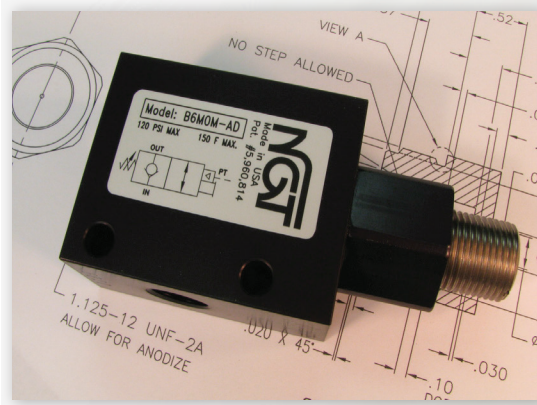


TURN CW TO CLOSE AT A HIGHER PRESSURE

PORT SIZES		
PILOT	INPUT	OUTPUT
1/8 NPTF	1/4 NPTF	1/4 NPTF
1/8 NPTF	3/8 NPTF	3/8 NPTF
G1/4 BSPP	G1/4 BSPP	G1/4 BSPP
G1/8 BSPP	G3/8 BSPP	G3/8 BSPP



EXAMPLE: With the output pressure or trapped pressure at 80 psi the pilot pressure to open the valve must be a minimum of 55 psi. The valve will close when the back pressure drops to 40 psi.



- Adjustable Pilot Pressure
- Faster Stops
- .000052 cc/min Leak Rate
- Manual Release Option

Basic Operation:

Locks any pneumatic device in position when a pressure drop or total loss of pressure occurs. Set the valve to close at a certain pressure. The pilot line reads the pressure and closes the valve when the pressure drops below the set pressure.

Operating Data:

- Max. Pressure: 120 psi
- Min. Pilot Pressure: Adjustable
- Leak Rate: .0000522 cc/min.
- Temp. Range: 30-150 F
- Cycle Rate: 1 cyc./sec.
- Flow Capacity (Cv): 1.7 max. (1/8)
2.6 max. (1/4 & 3/8)
- Cracking Pressure: 1-2 psi
- Service: Properly filtered dry air and lubricated air.

Model No.	1/8 NPTF	1/4 NPTF	3/8 NPTF	1/4 BSPP	3/8 BSPP
No Manual Release	B2M00AD	B4M00AD	B6M00AD	BG4M00AD-1	BG6M00AD
Manual Release	B2M0MAD	B4M0MAD	B6M0MAD	BG4M0MAD-1	BG6M0MAD
Flush Manual Release	B2MF MAD	B4MF MAD	B6MF MAD	BG4MF MAD-1	BG6MF MAD